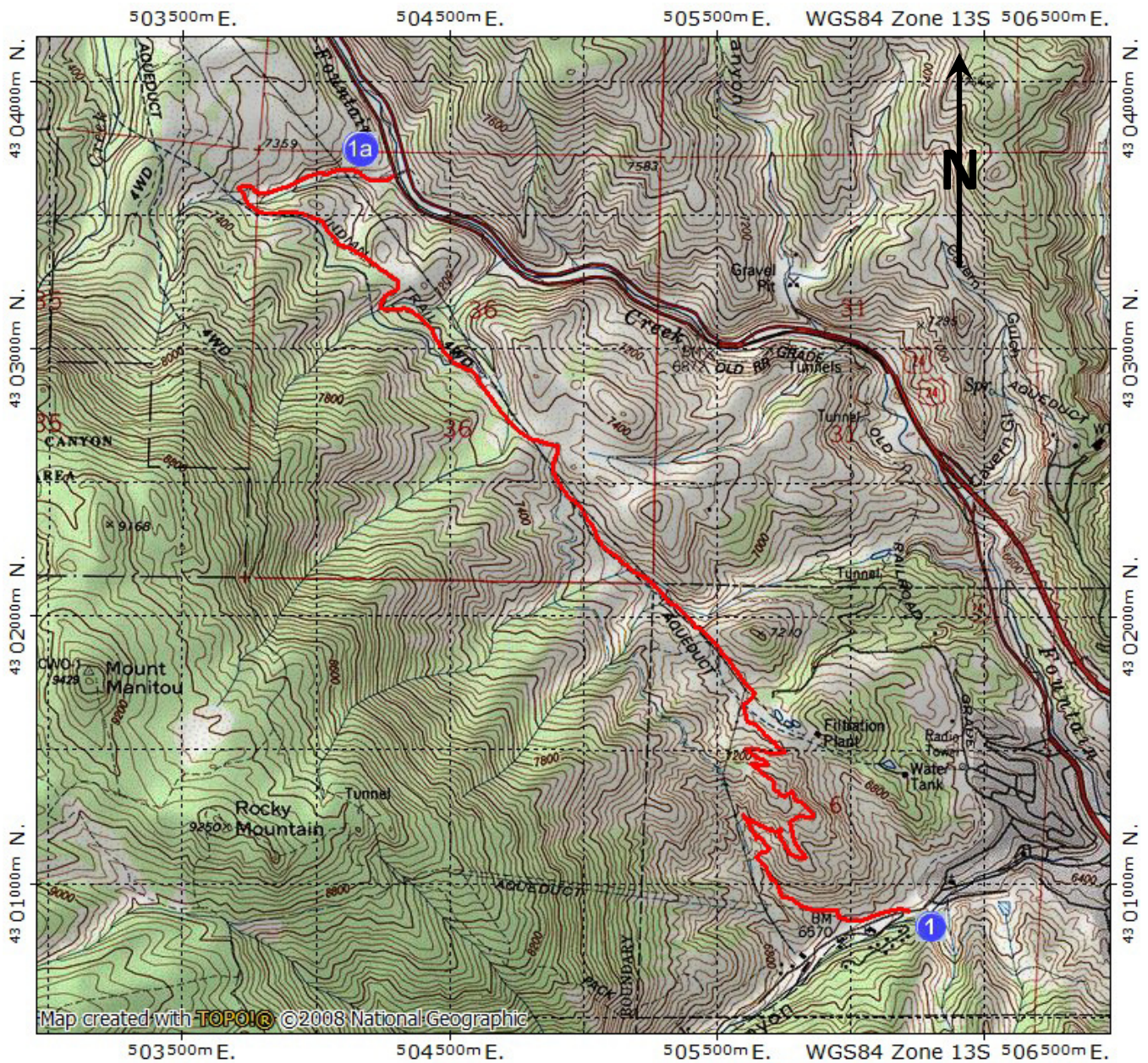


Ring the Peak Trail Segment 1-1a

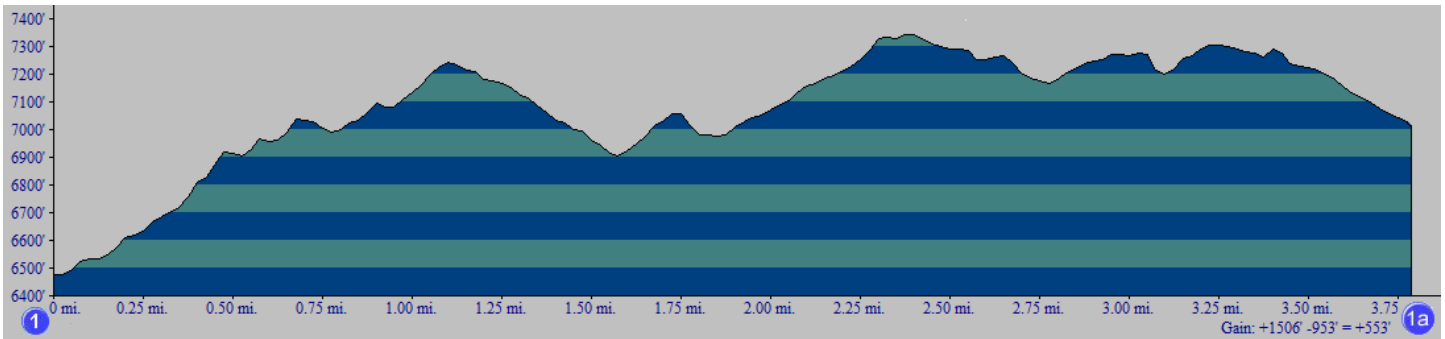


Counterclockwise Instructions

Portal 1 – Manitou Springs, at the base of the Incline above the exit for the Cog railway parking. Walk up Ruxton Avenue, which has sidewalks then a pedestrian lane on the west side, to the Cog parking lots on the right. Walk up through the parking lot to the base of the Incline. Take the road to the right of the Incline and watch for a trail on the right. Take the trail over the ridge and down to where it joins the old Ute trail. Turn left (right goes to Rattlesnake Gulch). Continue to Longs Ranch Road. Turn right to go down to U.S. 24. You can continue by following the driving directions to Portal 2.

Portal 1a – Due to the Waldo Canyon fire there is no vehicle parking at this portal.

Profile of Trail Segment 1-1a



Driving Directions to the Portals

	<p>Manitou Drive west on US 24 (W. Cimarron St.) to the Manitou Ave. Exit (approx. 4 miles from the intersection of I-25 and U.S. 24). Drive west on Manitou Ave. through downtown Manitou Springs to the intersection with Ruxton Ave. (approx. 1.4 miles). Turn left on Ruxton Ave. You will come to the clockwise trailhead first, at Iron Spring mineral springs (under a gazebo) on your left. Go behind the spring to the trail. The counterclockwise trailhead is at the base of the Incline. Walk up the exit drive from the Cog Railway parking lot. Parking is very limited and has fees. The Barr Trailhead lot allows overnight parking. The Cog lot sometimes allows hiker parking, also for a fee. The Barr Trailhead at the end of Hydro St. has a public restroom. The base of the Incline has port-a-potties.</p>
	<p>Long Ranch Road Because of the Waldo Canyon fire, this portal is closed. No parking is allowed on either side of U.S. 24.</p>

User assumes all risks associated with the use of this map. As with all maps and map related data, inaccuracies may exist and conditions may change.